

Ricoh Aficio MP C2500/C3000 & C3500/C4500 Series  
Color Multifunctional Systems  
Any job. Any time. Any place.

**RICOH**

versatile



color



efficient



# Ricoh Aficio MP C2500/C3000 & C3500/C4500 Series

Everything you want in a document imaging system—and more. Businesses everywhere are recognizing the advantages of color documents to their long-term success. Ricoh has been at the forefront of this color revolution, engineering a full line of multifunctional devices that make color a productive and easily accessible part of everyday document workflow.

The RICOH® Aficio® MP C2500/C3000 & C3500/C4500 Series, with its wide range of choices in speed and output volume ... ability to print full color as fast as black & white\* ... extensive finishing capabilities and sophisticated security, is flexible enough to bring the advantages of color anywhere within your organization.



# Versatile Productive Reliable Color

## As fast and productive as you want it.

The Ricoh Aficio MP C2500/C3000 & C3500/C4500 Series lets you choose the speed and capabilities you need to maximize productivity and meet your tightest deadlines:

- Output speeds of up to 25, 30, 35 or 45 pages per minute in both full color *and* black & white\* mean you don't have to sacrifice productivity to get color output.
- A range of processing speeds and storage capacities allows you to fit just the right horsepower to your workflow.
- Scanning times are accelerated, so sharing documents and files is not only cost-free, but fast.
- Network traffic stays fast and efficient thanks to optional PDF Direct Print technology, which sends PDF files directly to the system.

## As easy to use as you want it.

You don't need to be technologically savvy to see the advantages of the Ricoh Aficio MP C2500/C3000 & C3500/C4500 Series. Its benefits are easily accessible and understandable by every member of your organization.

- Walk-up users will appreciate the oversized, full-color LCD panel with its bigger and brighter fonts, and the larger, more comfortable concave keys that make programming jobs a snap.
- IT will value the easy connectivity, which includes Ethernet, USB and optional wireless capabilities—everything they need to get these systems operational—fast.
- Everyone will appreciate the simple-to-replace toner cartridges and the easy-grip tray handles that make it easy to restock paper—even when jobs are running.
- Employees who use new applications will like the robust print driver support, which processes documents created in a variety of programs.

## As colorful as you want it.

Now *all* your documents can benefit from outstanding color—greater readability, more attention-getting graphics, a more professional image for your organization—because producing color documents is as fast and easy as black & white. With the Ricoh Aficio MP C2500/C3000 & C3500/C4500 Series, you get business documents of the highest quality.

- You no longer need a dedicated color output device or expensive outside resources to produce full color documents.
- Ricoh patented PxP™ Toner technology ensures that your color documents don't just meet, but *set* the standards for quality color today—finally providing you with the documents you've always wanted.

\*The Ricoh Aficio MP C4500 prints 45 ppm in black & white and 40 ppm in color.



A detachable scanner option allows you to lower the profile of the system and make the control panel even more accessible. (RicoH Aficio MP C3500/C4500 only)



Full-color LCD operation panel with enlargeable display and bright graphic icons simplifies job programming.



The Ricoh Aficio MP C2500/C3000 & C3500/C4500 Series can print your digital photos directly from PictBridge™-enabled cameras.

# Ricoh Aficio MP C2500/C3000 & C3500/C4500 Series

## As flexible as you want it.

Printing high-quality black & white or full-color documents is just the beginning of your choices with the Ricoh Aficio MP C2500/C3000 & C3500/C4500 Series.

- Send *any* document instantly, securely and at no cost—to any network destination with powerful Ricoh Scan-to technology.
- Store and retrieve documents on-site for re-printing, re-faxing, editing, and more with the standard Document Server.
- Fax directly from your PC and eliminate outdated and misdialed numbers by pulling in existing addresses from your company directory.
- Print photos directly from a digital camera, without using a computer.

## As professional as you want it.

The Ricoh Aficio MP C2500/C3000 & C3500/C4500 Series could be the first multifunctional system to produce documents exactly the way you envision them, instead of having to settle for the best you can get.

- Produce documents with multiple paper types, weights and orientations with the high-capacity 3,100-sheet paper supply.
- Output onto letterhead, transparencies and special stocks up to 12" x 18" and create durable document covers, heavyweight signage and postcards in-house—up to 140 lb. Index through the Bypass and up to 120 lb. Index from the trays.
- Choose from a variety of professional finishing options, allowing you to produce hole-punched, folded and even saddle-stitched output:
  - Equip the Ricoh Aficio MP C2500/C3000 with either a 1,000-Sheet Finisher with traditional stapling, a 1,000-Sheet Finisher with booklet finishing or a 500-Sheet Finisher for smaller jobs.
  - Configure the Ricoh Aficio MP C3500/C4500 with either a 1,000-Sheet Finisher, 2,000-Sheet Booklet Finisher or 3,000-Sheet Finisher.

## As secure as you want it.

The security of your documents and your network needs to be iron clad. The Ricoh Aficio MP C2500/C3000 & C3500/C4500 Series protects both at every step in your document workflow.

- Control access to system functions with several methods of user authentication.
- Restrict color usage and other system capabilities to only those users who need it, helping control costs and simplify management.
- Enhance the security of latent hard drive data with the optional Ricoh DataOverwriteSecurity System (DOSS), which automatically overwrites information after each copy, scan, fax and print job.



The Ricoh Aficio MP C2500/C3000 & C3500/C4500 Series provides an array of document management capabilities.



The Ricoh Aficio MP C2500/C3000 & C3500/C4500 Series can be equipped for professional booklet finishing.



A number of features are available to limit device access, track usage and protect confidential information stored in memory.

# Versatile Productive Reliable Color

## As customized as you want it.

Ricoh's Embedded Software Architecture—an innovative Java (J2ME)-compatible software development platform—allows the development of customized applications for the Ricoh Aficio MP C2500/C3000 & C3500/C4500 Series, dramatically enhancing your organization's workflow.

- All models within the series can easily be customized to meet your needs by controlling the following features:
  - Operation Panel
  - Printing
  - Saving Files
  - Scanning

## As simple to manage as you want it.

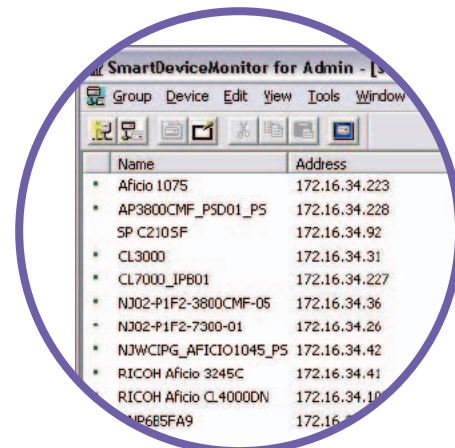
Most systems managers are already overscheduled and overworked. The Ricoh Aficio C2500/C3000 & C3500/C4500 Series is designed to make their lives easier by simplifying device and document management.

- Web Image Monitor and SmartDeviceMonitor allow users to view job queues and check supply levels, and allow administrators to adjust network settings and modify user rights, and more—all from their desktop.
- These devices fully support @Remote—an intelligent remote management system for networked printing devices. With the @Remote service, you'll be able to enjoy no-touch meter reading and reporting. The meter data can be used for accurate, timely meter-to-billing and is used for Web-based Fleet Reporting.

## Your Environmental Partner

Ricoh continues its long-standing commitment to developing office solutions with environmentally friendly and superior energy- and supply-saving features, including:

- Power-saving Sleep Mode
- Duplex and Combine Copy Modes
- Toner Recycling
- Low Noise Levels
- Minimal Ozone Emissions
- RoHS (Restriction of Hazardous Substances) Compliant



SmartDeviceMonitor for Admin is a robust utility designed for network administrators to install, monitor, and manage all networked Ricoh peripherals from a single workstation.

# The System You Want

You decide how much speed, volume and productivity you want—and what kind of finishing you need.

**Optional Inner One-Bin Tray** provides a cost-effective option to separate outputs from different system functions.



The Ricoh Aficio MP C2500/C3000 can be equipped with either a **1,000-Sheet Finisher with traditional stapling**, a **1,000-Sheet Finisher with booklet finishing** or a **500-Sheet Finisher** for smaller jobs.



The Ricoh Aficio MP C3500/C4500 can be configured with a **1,000-Sheet Finisher**, **2,000-Sheet Booklet Finisher** or **3,000-Sheet Finisher**, letting you reduce outsourcing by creating professional-quality booklets in-house.



An **optional Two-Tray Paper Bank** maximizes versatility by giving you the ability to output onto 5 different sizes and orientations of paper.



# Ricoh Aficio MP C2500/C3000 & C3500/C4500 Series

## Optional Hardware Accessories



**Standard 50-Sheet Automatic Reversing Document Feeder** expands your capabilities on the Ricoh Aficio MP C2500/C3000.

**Standard 100-Sheet Automatic Reversing Document Feeder** boosts document throughput on the Ricoh Aficio MP C3500/C4500.



**Standard Automatic Stackless Duplexing** produces two-sided booklets, brochures, agendas, and more.



**Standard dual front-loading, 500-Sheet Paper Trays and a 100-Sheet Stack Bypass** provide 3-way, 1,100-sheet capacity on all models.

### Two Tray Paper Bank\* for entire Series

Paper Capacity: 1,000 sheets (500 sheets x 2 trays)  
Paper Size: 7.25" x 10.5" to 11" x 17"  
Paper Weight: 16 – 57 lb. Bond/120 lb. Index (60 – 216 g/m<sup>2</sup>)

### Large Capacity Tray\* for entire Series

Paper Capacity: 2,000 sheets (1,000 sheets x 2)  
Paper Size: 8.5" x 11"  
Paper Weight: 16 – 57 lb. Bond/120 lb. Index (60 – 216 g/m<sup>2</sup>)

### FAC30 Cabinet\* for MP C2500/C3000

### FAC33 Cabinet\* for MP C3500/C4500

\*Please note Cabinet Stand or a paper option must be selected.

### 500-Sheet Finisher (SR3010)\* for MP C2500/C3000 only

Paper Sizes: 5.5" x 8.5" – 11" x 17"  
Paper Weights: 14 – 34 lb. Bond (52 – 128 g/m<sup>2</sup>)  
Stack Capacity: 500 sheets (8.5" x 11" or smaller)  
250 sheets (8.5" x 14" – 11" x 17")  
Staple Capacity: 50 sheets (8.5" x 11")  
30 sheets (8.5" x 14" or larger)  
Staple Positions: 1 staple/2 positions; 2 staples/1 position

### 1,000-Sheet Finisher (SR790)\* for entire Series

Paper Sizes: 5.5" x 8.5" – 12" x 18"  
Paper Weights: Shift Tray: 17 – 43 lb. Bond/90 lb. Index (64 – 163 g/m<sup>2</sup>); Proof Tray: 14 – 68 lb. Bond/140 lb. Index (52 – 260 g/m<sup>2</sup>)  
Stack Capacity: Proof Tray: 250 sheets (8.5" x 11" or smaller), 50 sheets (8.5" x 14" or larger); Shift Tray: 1,000 sheets (8.5" x 11" or smaller), 500 sheets (8.5" x 14" or larger)  
Staple Capacity: 50 sheets (8.5" x 11")  
30 sheets (8.5" x 14" or larger)  
Staple Paper Sizes: 8.5" x 11" – 12" x 18"  
Staple Positions: 1 staple/2 positions; 2 staples/2 positions

### 1,000-Sheet Booklet Finisher (SR3000)\* for MP C2500/C3000 only

Paper Sizes: 5.5" x 8.5" – 11" x 17", 12" x 18"  
Paper Weights: Upper Proof Tray: 14 – 28 lb. Bond (52 – 105 g/m<sup>2</sup>); Lower Shift Tray: 14 – 68 lb. Bond/140 lb. Index (52 – 256 g/m<sup>2</sup>)  
Paper Capacity: Upper Proof Tray: 100 sheets (8.5" x 11" or smaller), 50 sheets (8.5" x 14" or larger); Lower Shift Tray: 1,000 sheets (8.5" x 11" or smaller), 500 sheets (8.5" x 14" or larger)  
Staple Capacity: 50 sheets (8.5" x 11")  
30 sheets (8.5" x 14" or larger)  
Saddle Stitch: 10 sheets (up to 40 pages)  
Staple Paper Sizes: 8.5" x 11" to 11" x 17"  
Staple Positions: 1 staple/2 positions; 2 staples/3 positions

\*2/3-Hole Punch Unit Option available for Booklet Finisher

### 2,000-Sheet Booklet Finisher (SR3020)\* for MP C3500/C4500 only

Paper Size: 5.5" x 8.5" to 11" x 17", 12" x 18"  
Paper Weight: Proof Tray: 14 – 43 lb. Bond/90 lb. Index (52 – 163 g/m<sup>2</sup>); Shift Tray: 14 – 68 lb. Bond/140 lb. Index (52 – 256 g/m<sup>2</sup>)  
Stack Capacity: Proof Tray: 250 sheets (8.5" x 11" or smaller), 50 sheets (8.5" x 14" or larger); Shift Tray: 2,000 sheets (8.5" x 11" or smaller), 1,000 sheets (8.5" x 14" or larger)  
Staple Capacity: 50 sheets (8.5" x 11")  
30 sheets (8.5" x 14" or larger)  
Saddle Stitch: 15 sheets  
Staple Paper Size: 8.5" x 11" to 11" x 17", 12" x 18"  
Staple Positions: 1 staple/3 positions; 2 staples/3 positions

\*2/3-Hole Punch Unit Option available for Booklet Finisher

### 3,000-Sheet Finisher (SR3030)\* for MP C3500/C4500 only

Paper Size: 5.5" x 8.5" to 11" x 17", 12" x 18"  
Paper Weight: Proof Tray: 14 – 43 lb. Bond/90 lb. Index (52 – 163 g/m<sup>2</sup>); Shift Tray: 14 – 68 lb. Bond/140 lb. Index (52 – 256 g/m<sup>2</sup>)  
Stack Capacity: Proof Tray: 250 sheets (8.5" x 11" or smaller), 50 sheets (8.5" x 14" or larger); Shift Tray: 3,000 sheets (8.5" x 11")  
Staple Capacity: 50 sheets (8.5" x 11")  
30 sheets (8.5" x 14" or larger)  
Staple Paper Size: 8.5" x 11" to 11" x 17", 12" x 18"  
Staple Positions: 1 staple/3 positions; 2 staples/1 position

\*Bridge Unit is required for all finishers. 2/3-Hole Punch Unit Option available for 3,000-Sheet Finisher.

### Inner 1 Bin Tray for MP C2500/C3000 only

Paper Size: 5.5" x 8.5" to 11" x 17"  
Bin Capacity: 125 sheets  
Paper Weights: 16 – 45 lb. Bond/90 lb. Index (60 – 169 g/m<sup>2</sup>)

### Inner 1 Bin Tray for MP C3500/C4500 only

Paper Size: 5.5" x 8.5" to 11" x 17"  
Bin Capacity: 125 Sheets  
Paper Weights: 16 – 45 lb./90 lb. Index (60 – 169 g/m<sup>2</sup>)

### Internal Shift Sort Tray\* for MP C2500/C3000 only

Paper Sizes: 5.5" x 8.5" – 12" x 17"  
Paper Capacity: 250 sheets (8.5" x 11" or smaller)  
125 sheets (8.5" x 14" or larger)  
Paper Weights: 14 – 67 lb. Bond/140 lb. Index (52 – 253 g/m<sup>2</sup>)

\*Internal Shift Sort Tray cannot be installed with a finisher

# Ricoh Aficio MP C2500/C3000 & C3500/C4500 Series Specifications



## General Specifications

**C2500, C3000, C3500, C4500, C2500 SPF, C3000 SPF, C3500 SPF, C4500 SPF (SPF version includes Fax Option)**

<b>Printing Process:</b>	Dry Electrostatic Transfer with Dual Component Development; 4-Drum Method
<b>Output Speed:</b>	C2500: 25-ppm B&W/Full Color C3000: 30-ppm B&W/Full Color C3500: 35-ppm B&W/Full Color C4500: 45-ppm B&W/40-ppm Full Color
<b>Warm-up Time:</b>	C2500/C3000/C3500: < 45 seconds C4500: < 60 seconds
<b>First Copy Time:</b>	C2500/C3000: Full Color: 9.7 seconds; B&W 6.7 seconds C3500: Full Color: 8 seconds; B&W: 4.9 seconds C4500: Full Color: 6.5 seconds; B&W: 3.9 seconds
<b>Copy/Print/Scan Resolution:</b>	600 x 600 dpi
<b>Document Feeder:</b>	Automatic Reversing Document Feeder (ARDF) (Standard)
<b>Original Capacity:</b>	C2500/C3000: 50 Sheets C3500/C4500: 100 sheets Paper Size: 5.5" x 8.5" - 11" x 17" Paper Weight: Simplex: 11 - 34 lb. Bond (40 - 128 g/m <sup>2</sup> ); Duplex: C2500/C3000: 14 - 28 lb. Bond (52-105 g/m <sup>2</sup> ) C3500/C4500: 14 - 34 lb. Bond (52-128 g/m <sup>2</sup> ) C2500/C3000: Dimensions: 21.7" x 19.3" x 4.7" (550 x 491 x 120mm) C3500/C4500: Dimensions: 22.4" x 20.5" x 5.3" (570 x 520 x 135 mm)
<b>Exposure Glass:</b>	Up to 11" x 17"
<b>Multiple Copies:</b>	Up to 999 copies
<b>Copy Size:</b>	11" x 17" max (full bleed on 12" x 18")
<b>Input Capacity:</b>	Standard: 2 x 500 sheets + 100-sheet Bypass Tray; Max: 3,100 sheets (w/LCT)
<b>Output Capacity:</b>	Standard: 500 sheets Face Down; Max: C2500/C3500: Maximum: 1,625 sheets (with 1,000 Sheet Finisher + Inner 1 Bin Tray) C3500/C4500: Maximum 3,625 sheets (with 3,000 Sheet Finisher + Inner 1 Bin Tray)
<b>Paper Sizes:</b>	First Paper Tray: 8.5" x 11"; Second Paper Tray/Paper Bank: 7.25" x 10.5"-11" x 17"; Bypass Tray: Width: 3.5" - 12", Length: 5.8" x 18" (12" x 18" max); Large Capacity Tray: 8.5" x 11"
<b>Paper Weights:</b>	Standard Trays/Paper Bank/Large Capacity Tray: 16 - 57 lb. Bond; 120 lb. Index (60 - 216 g/m <sup>2</sup> ); Bypass Tray: 16 - 67 lb. Bond; 140 lb. Index (60 - 256 g/m <sup>2</sup> ) (Source for Labels, OHP); Duplex Unit: C2500/C3000: 17 - 45 lb. Bond; 90 lb. Index (64 - 169 g/m <sup>2</sup> ); C3500/C4500: 16 - 45 lb. Bond; 90 lb. Index (60 - 169 g/m <sup>2</sup> )
<b>Paper Types:</b>	Plain paper, laser printer qualified transparencies, labels, envelopes
<b>Auto Duplex:</b>	Standard
<b>Zoom:</b>	25% - 400% in 1% increments
<b>Preset Reduction (%):</b>	93, 85, 78, 73, 65, 50, 25
<b>Preset Enlargement (%):</b>	400, 200, 155, 129, 121
<b>Dimensions (WxDxH):</b>	C2500/C3000: 25.6" x 25.9" x 29.1" (650 x 659 x 740mm) Standard Configuration; C3500/C4500: 26.4" x 26.7" x 30" (670 x 677 x 760mm) Standard Configuration

<b>Weight:</b>	C2500/C3000: <264.5 lb. (120kg) w/ARDF C3500/C4500: <287 lb. (130kg) w/ARDF
<b>Power Requirements:</b>	120V, 12A, 60Hz
<b>Power Consumption:</b>	1,440 Watts maximum

## Printer Controller Specifications (Standard)

<b>CPU:</b>	C2500/C3000: RM7035C @ 600MHz, Embedded; C3500/C4500: RM7935 @ 835MHz, Embedded
<b>Memory:</b>	C2500/C3000: 1GB RAM & 40GB HDD Standard (Shared); C3500/C4500: 1GB RAM & 80GB HDD Standard (Shared)
<b>Max. Print Speed:</b>	C2500: 25-ppm B&W/Full Color C3000: 30-ppm B&W/Full Color C3500: 35-ppm B&W/Full Color C4500: 45-ppm B&W/40-ppm Full Color
<b>Page Description Languages:</b>	PCL5c, PCL6, RPCS (Standard); Genuine Adobe® Postscript® 3™, includes PDF Direct Print (Optional)
<b>Max. Print Resolution:</b>	2400 dpi equivalent x 600 dpi
<b>Standard Interfaces:</b>	10BaseT/100BaseTX Ethernet (RJ-45), USB 2.0
<b>Optional Interfaces:</b>	IEEE 802.11b Wireless LAN Interface Type H; Bluetooth Wireless Board Type 3245; IEEE 1284 Parallel Interface Type A; IEEE 1394; USB Host Interface Type A*
*Required with optional Camera Direct Print Card	
<b>Network/OS:</b>	Windows 95/98SE/NT4.0/2000/Me/XP/Server 2003; Novell NetWare 3.12, 3.2, 4.1, 4.11, 5.0, 5.1, 6, 6.5; UNIX filters for Sun Solaris, HP-UX, SCO OpenServer, RedHat Linux, and IBM AIX; Mac OS 8.6-9.2x, OS X 10.1 or later; SAP R/3, NDPS Gateway; IBM iSeries/ AS/400-using OS/400 Host Print Transform
<b>Utilities:</b>	SmartDeviceMonitor for Admin and Client; Web SmartDeviceMonitor; Web Image Monitor; DeskTopBinder Lite; Print Utility for MAC (w/Adobe PS3 opt.)

## Security Specifications:

<b>DataOverwriteSecurity System (DOSS) Type D (Optional):</b>	Security feature that overwrites latent data on the system's hard drive after copy, scan, fax and print jobs.
<b>Copy Data Security Unit Type A (Optional):</b>	Copies of prints made with this feature will be blacked out or embedded with a watermark to deter illegal copying.
<b>Other Security Features:</b>	SNMP v3 Authentication and Data Encryption (password/address book encryption); PDF Direct Print Password Protection; Locked (Secure) Print; User Codes; User Authentication; WPA (Wi-Fi Protect Access Support); PDF Encryption

## Scanner Specifications (Standard)

<b>Scanner Resolution:</b>	Monochrome Mode: From 100 to 600 dpi (1200 dpi for TWAIN B&W only); Full Color Mode: From 100 to 600 dpi; Default Setting: 200 dpi
<b>Scanning Speed*:</b>	C2500/C3000: Scanning Speed: 50-ipm B&W; 35-ipm; Full Color (200 dpi via ARDF); C3500/C4500: 63-ppm B&W and 38-ppm Full Color (200 dpi via ARDF)

\*When the File Format Converter Option is installed, the maximum scanning for black & white/ full-color is 50 ipm/ 50 ipm for the C2500/C3000 and 63 ipm/58 ipm for the C3500/C4500.

<b>Scan Area:</b>	Main Scan: 11.7" (297mm), Sub Scan: 17" (432mm)
-------------------	---

<b>Scan Size:</b>	Contact Glass: 11" x 17", 8.5" x 14", 8.5" x 11"; ARDF: 5.5" x 8.5" - 11" x 17"
<b>Scan Mode:</b>	Standard: BW Text/Line Art, BW Text, BW Text/Photo, BW Photo, BW Grayscale, FC Photo, FC Text; Opt: ACS (w/Opt. File Converter)
<b>Compression Method:</b>	B&W: TIFF (MH, MR, MMR), Grayscale, Full Color: JPEG
<b>Scan-to Modes Supported:</b>	Scan-to-Email (with LDAP support); Scan-to-URL; Scan-to-Folder (SMB/FTP/NCP); Network TWAIN scanning

## Document Server Specifications (Standard)

<b>Capacity:</b>	C2500/C3000: 40GB (shared with other functions); C3500/C4500: 80GB (shared with other functions)
<b>Max. Stored Documents:</b>	C2500/C3000: 1,000 documents; C3500/C4500: 2,000 documents
<b>Max. Pages per Document:</b>	C2500/C3000: 2,000 pages; C3500/C4500: 9,000 pages
<b>Max. Pages of all Stored Documents:</b>	C2500/C3000: 2,000 pages; C3500/C4500: 9,000 pages

## Facsimile Specifications (Optional)

<b>Fax Option Type C3000 (C2500/C3000)</b>	
<b>Fax Option Type C4500 (C3500/C4500)</b>	
<b>Type:</b>	ITU-T (CCITT) G3, Add'l G3 (optional)
<b>Circuit:</b>	PSTN, PBX
<b>Resolution:</b>	200 x 100 dpi, 200 x 200 dpi, 400 x 400 dpi (with optional SAF memory)
<b>Modem Speed:</b>	33.6K - 2,400bps w/Auto Fallback
<b>Compression Method:</b>	MH, MR, MMR, JBIG
<b>Transmission Speed:</b>	G3: Approximately 2 seconds/page (w/JBIG); G3: Approximately 3 seconds/page (w/MMR)
<b>Scan Speed:</b>	.56 seconds/page (Standard/Detail Mode); 1.12 seconds/page (Super Fine Mode)
<b>Auto Dialing:</b>	2,000 Quick Dials, 100 Group Dials (500 locations each)
<b>Memory Capacity (SAF):</b>	Standard 4MB (approximately 320 pages); Maximum 28MB (2,240 pages)
<b>Additional Modes:</b>	Internet Fax by E-mail (T.37); IP Fax (T.38); LAN Fax; Fax Forward to E-mail/Folder; LDAP Support
<b>Options:</b>	Additional G3 Lines (up to 2); Fax SAF Memory; Telephone Handset

## Additional Accessories

File Format Converter; Key Counter Bracket Type H; VM Card Type C for Embedded Software Architecture Application; Camera Direct Print Card Type A\*; Optional Counter Interface Unit Type A; Scanner Accessibility Option Type 4045 (C3500/C4500 only).

\*Requires USB Host Interface.

## Supplies and Consumables

C2500/C3000: Black Toner: 20,000 pages; Cyan, Magenta, Yellow Toners: 15,000 pages each (toner yields based on 5% coverage)  
C3500/C4500: Black Toner: 23,000 pages; Cyan, Magenta, Yellow Toners: 17,000 pages each (toner yields based on 5% coverage)

Ricoh Consumables: For maximum performance and yield, we recommend using genuine Ricoh parts and supplies.

# RICOH

www.ricoh-usa.com

Ricoh Corporation, Five Dedrick Place, West Caldwell, NJ 07076

Ricoh® and the Ricoh Logo are registered trademarks of Ricoh Company, Ltd. Windows® and Windows® 95/98/Me/NT4.0/2000/XP are registered trademarks of Microsoft Corporation. Macintosh®, Mac® OS and AppleTalk® are registered trademarks of Apple Computer, Inc. Adobe® and PostScript® are registered trademarks of Adobe Systems, Inc. PCL® is a registered trademark of Hewlett-Packard Company. RPCS™ is a trademark of Ricoh Company, Ltd. All other trademarks are the property of their respective owners. Printed in U.S.A. on recycled paper. Print speed may be affected by network, application or PC performance. Specifications and external appearances are subject to change without notice. Products are shown with optional features.

Printed in U.S.A. on recycled paper because Ricoh cares.



CA-0562